

## DINING & BARS

### MIDSHIP MARKETPLACE

Open Daily

Sunday - Thursday 6:30am to 6:00pm  
Friday & Saturday 6:30am to 8:00pm  
Promenade Deck, Port Side, Midships



### PROMENADE CAFÉ

Open Daily

Breakfast Buffet 6:30am to 11:00am  
Lunch/Dinner 11:00am to 9:00pm  
Promenade Deck, Starboard, Midships



### CHELSEA CHOWDER HOUSE & BAR

Open Daily

Bar Opens at 12:00pm (Lunch)  
Dinner (Restaurant & Bar)

Sunday - Thursday  
5:00pm to 9:00pm  
Friday & Saturday  
5:00pm to 10:00pm  
Entrance Promenade Deck, Port Side, Midships



### OBSERVATION BAR

Open Daily

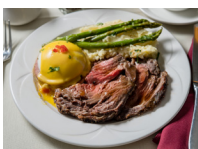
Monday - Thursday  
4:00pm to 10:30pm  
Happy Hour 4:00pm to 7:00pm  
Friday & Saturday  
11:00am to 11:30pm  
Sunday 11:00am to 10:30pm  
Promenade Deck, Forward



### ROYAL SUNDAY BRUNCH

Open Sundays

10:00am to 2:00pm  
Grand Salon, R-Deck



## STAY THE NIGHT!

Go to Level 3 (A-Deck) and proceed to the Hotel Lobby to reserve your stateroom or book online at [QueenMary.com](http://QueenMary.com)



## THE QUEEN MARY

888.217.1281 | [QueenMary.com](http://QueenMary.com)

1126 Queens Highway, Long Beach, CA 90802

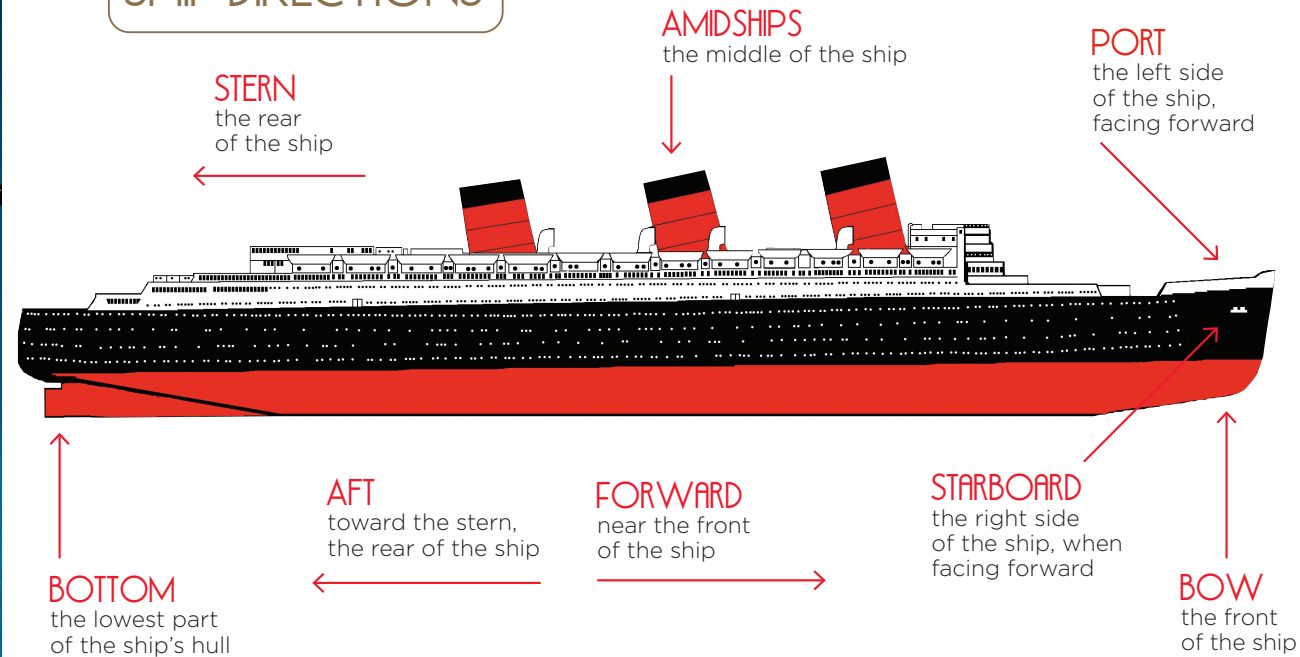
Follow Us  
@TheQueenMary



# QUEEN MARY GUIDE MAP



## SHIP DIRECTIONS



## THE QUEEN MARY'S OFFICIAL NAME IS RMS QUEEN MARY

RMS simply stands for Royal Mail Ship. The Cunard Line had a contract to carry the Royal Mail in their fast express passenger liners across the North-Atlantic Ocean. In its day, the Queen Mary and Queen Elizabeth were of the largest and fastest providers of transatlantic mail service between England and America. Each of the Queens would carry several thousand bags of mail per voyage. Queen Mary was the great-grandmother of the current king of England, Charles III.

**Transatlantic Crossings:** 1001

**Constructed by:** John Brown & Co., Ltd., Clydebank, Scotland

**Commissioned by:** Cunard Steamship Co., Ltd.

**Keel Laid:** December 1, 1930

**Date Launched:** September 26, 1934

**Maiden Voyage:** May 27, 1936

**Portholes:** Over 2,000

**Rivets:** Over 10 million

**Gross Tonnage:** 81,237 gross tons (230,039 cu. m.)

**Overall Length:** 1,019.5 ft. (310.74 m.)

**Height from Keel to Forward Smokestack Top:** 181 ft. (55.17 m.)

**Number of Decks:** 12

**Passenger Capacity:** 1,957

**Officers and Crew:** 1,174

**Horsepower:** 160,000

**Cruising Speed:** 28.5 knots (55.17 km./hr.)

**Whistles:** 3 - Steam type. Two on forward funnel, one on middle funnel. Each over 6 ft. (1.83 m.) long, weighing 2,205 lb. (1,002 kg.)

**Lifeboat Capacity:** 145 persons

**Smokestacks:** 3 - Elliptical in shape; 36 ft. (10.97 m.) fore and aft, 23.3 ft. (7.1 m.) wide

**Boilers:** 27

**Fuel Consumption:** 13 ft./gal (1 m./l.)

**Draft:** 39 ft. 4-9/16 in. (12.00 m.)

**Bow Anchors:** 2 at 16 tons (16,291 kg.)

**Anchor Height:** 18 ft. (5.48 m.)

**Length of Promenade Deck:** 724 ft. (220.68 m.)

**Length of Anchor Chain:** 990 ft.

**Weight of Anchor Chain:** 145 tons (145,000 kg.)

**Anchor Chain Link:** 2 ft. (61 cm.) long, weighing 224 lb. (101.8 kg.)

## TOURS & ATTRACTION AND POINTS OF INTEREST

### SPORTS DECK

Officers' Quarters, Radio Room (W6RO), Access to Bridge

### PROMENADE DECK

Tour Center (for Guided Tours), The Shipyard, Ship Model Gallery, Heritage Room, Main Hall, Bow Access  
Stern: Stairs leading to Isolation Ward

### M-DECK

Travel Bureau

### A-DECK

Fire House Exhibit, Hotel Lobby, Fitness Center, The Cunard Story, Bow Access

### R-DECK

Off-ship Walkway to Engine Room  
Midship: First-Class Pool Viewing

### D-DECK - STERN

Off-ship Walkway to **Visitors Center**  
Engine Room, Their Finest Hours Exhibit, Printing Press, Sisters of the Sea Exhibit

### TOURS

Glory Days Historical Tour, Glory Days Historical Tour en español, Hollywood Tour, VIP Art Deco Tour, Royal VIP Tour & Afternoon Tea, Haunted Encounters Tour, Steam & Steel Tour

### EXHIBITS

Their Finest Hours: Winston Churchill and the Queen Mary, The Cunard Story, Historic Exhibits

### ATTRACTIONS AT NIGHT

Paranormal Ship Walk, Grey Ghost Project, 57 Ghosts Séance

### THE HISTORY

The Queen Mary has played many roles throughout her illustrious career, and upon her Maiden Voyage in 1936, she was considered the grandest ocean liner ever built. During her heyday, many considered her the only civilized way to travel. With the outbreak of World War II she was transformed into a troopship nicknamed "The Grey Ghost." By the end of the war she had transported more than 800,000 troops, traveled more than 600,000 miles. Retired in 1967, she was purchased by the City of Long Beach and has remained an icon of the city.

All sales are final; no refunds or exchanges. All tours are subject to capacity and are based on a first come, first served basis. Tour routes & locations may vary daily based on availability. Hours of operation & availability are subject to change without notice. Due to the historic nature of the Queen Mary, some areas of the ship may not be accessible to guests with mobility restrictions. Tours may require the extensive use of stairs and/or standing for long periods of time. All paranormal tours take place in dark, enclosed areas and may not be suitable for all guests.

# SHIP INFORMATION

## WELCOME TO THE QUEEN MARY!

Her history is full of action, adventure, romance and paranormal activity offering a full service hotel, award-winning dining and unique attractions.

## FOR TOUR CHECK-IN AND TO PURCHASE ADDITIONAL TOURS AND EXHIBITS

Go to Level 4 (Promenade Deck) and proceed to the Tour Center. Please arrive at least 10 minutes early for all tours.

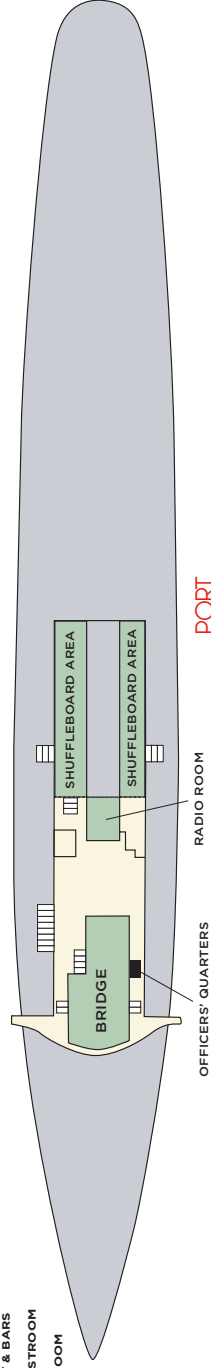
## FOR ASSISTANCE

Due to the historic nature of the ship, not all areas are accessible. For special accommodations for guided tours and historic exhibits, please go to the Tour Center located on level 4 (Promenade Deck); for the Stern go to the Wharf entrance on level 1 (ground level). For special accommodations with hotel rooms, please go to the Hotel Lobby on Level 3 (A-Deck).

## SPORTS DECK

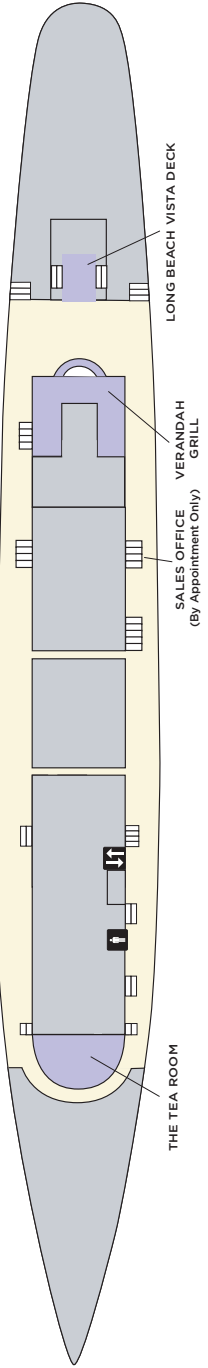
- RESTAURANT & BARS
- WOMEN'S RESTROOM
- MEN'S RESTROOM
- ELEVATOR
- SHOP

STARBOARD



PORT

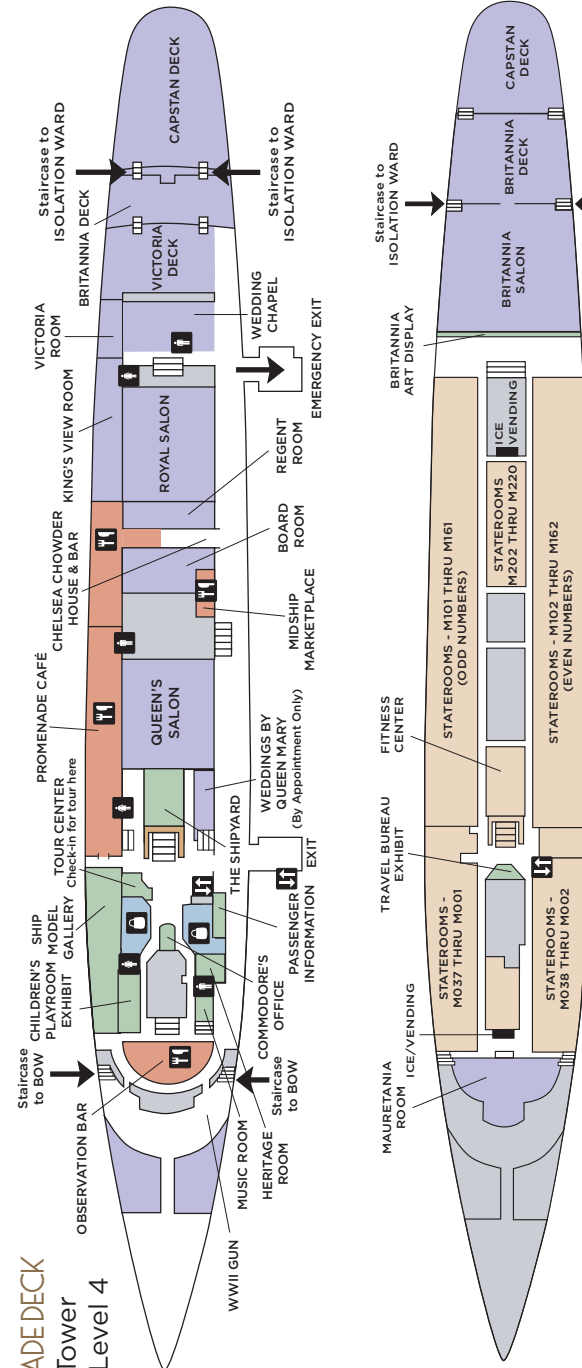
## SUNDECK



## PROMENADE DECK

Exterior Tower Elevator Level 4

BOW

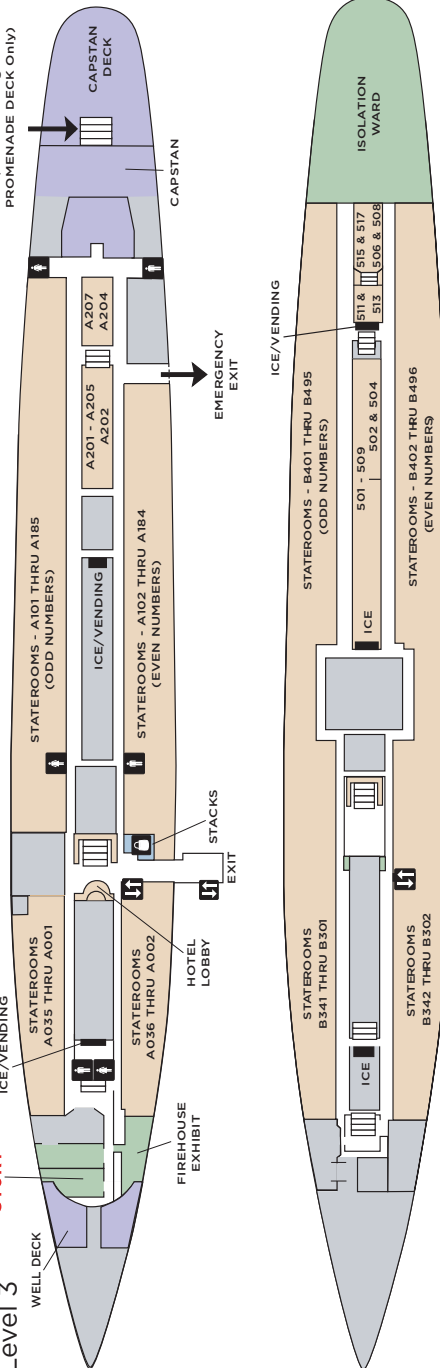


## M-DECK

## A-DECK

Exterior Tower Elevator Level 3

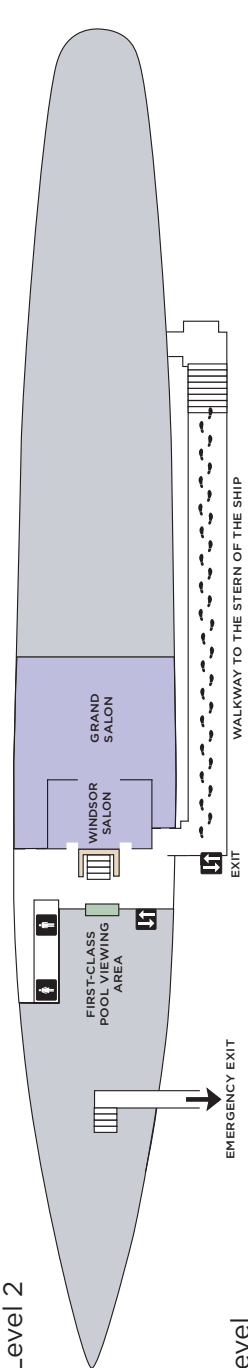
THE CUNARD STORY



## B-DECK

## R-DECK

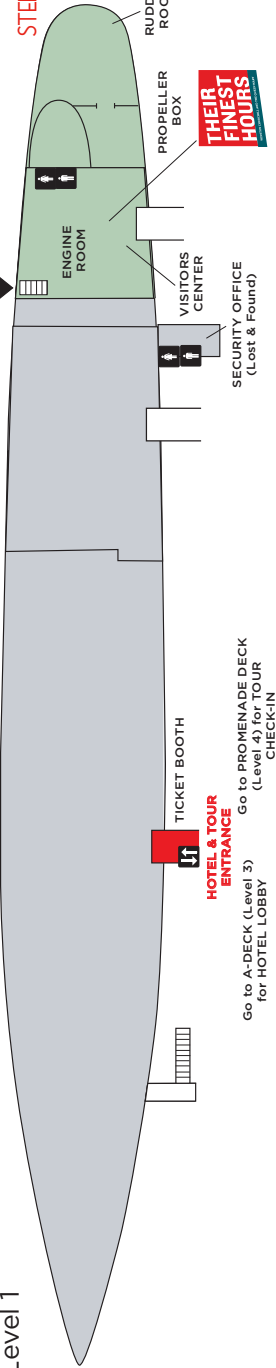
Exterior Tower Elevator Level 2



## D-DECK

Ground Level

Exterior Tower Elevator Level 1



## ATTRACTIONS & HISTORICAL EXHIBITS

- BRIDGE & OFFICERS' QUARTERS Sports Deck, Forward
- COMMODORE'S OFFICE Promenade Deck, Midships
- ENGINE ROOM D-Deck, Aft
- FIREHOUSE EXHIBIT A-Deck, Forward
- ISOLATION WARD A-Deck, Aft, Stern
- PRINT SHOP DISPLAY D-Deck, Aft
- QUEEN MARY HERITAGE ROOM Promenade Deck, Forward, Port
- QUEEN MARY HISTORIC EXHIBIT D-Deck, Aft
- RADIO ROOM (W/6RO) Sports Deck, Midships
- SHIP MODEL GALLERY Promenade Deck, Starboard
- SISTERS OF THE SEPEXHIBIT D-Deck, Aft
- THEIR FINEST HOURS EXHIBIT D-Deck, Aft
- TRAVEL BUREAU M-Deck, Midships
- THE CUNARD STORY A-Deck, Forward
- TOUR CENTER Promenade Deck, Midships
- THE SHIPYARD Promenade Deck, Midships
- WWI GUN Promenade Deck, Bow

## SHOPPING

- MARKETPLACE & STARBOARD SHOPPE Promenade Deck, Midships
- PICCADILLY DELIGHTS Promenade Deck, Midships
- STACKS A-Deck, Midships

## HOTEL

- HOTEL LOBBY A-Deck, Midships
- FITNESS CENTER Between M-Deck and A-Deck, Midships

## DINING

- CHELSEA CHOWDER HOUSE & BAR Promenade Deck, Midships
- MDSHIP MARKETPLACE Promenade Deck, Port
- OBSERVATION BAR Promenade Deck, Forward
- PROMENADE CAFE Promenade Deck, Midships
- ROYAL SUNDAY BRUNCH R-Deck Grand Salon

## MEETINGS & RECEPTIONS

- BOARD ROOM Promenade Deck, Midships
- BRITANNIA SALON M-Deck, Aft
- CAPSTAN ROOM Sun Deck, Aft
- GRAND SALON A-Deck, Aft
- R-DECK, MIDSHIPS R-Deck, Midships
- KING'S VIEW ROOM Promenade Deck, Starboard, Aft
- MURKIN ROOM M-Deck, Forward
- QUEEN'S SALON Promenade Deck, Midships
- REGENT ROOM Promenade Deck, Midships
- ROYAL SALON Promenade Deck, Midships
- THE TERRACE Sun Deck, Forward
- VERANDAH GRILL Sun Deck, Aft
- VICTORIA ROOM Promenade Deck, Aft
- WEDDINGS BY QUEEN MARY Promenade Deck, Midships
- WEDDING CHAPEL Promenade Deck, Aft
- WELL DECK A-Deck, Bow Area
- WINDSOR SALON R-Deck, Midships

\*Restaurants, shops, tours & exhibit hours may be seasonal and are subject to change pending any special events or private bookings.